

# Communicating Climate Change



**Savannah Kisling, REACCH Intern 2015**  
**Kathie Dello, Dr. Philip Mote, Dr. David Rupp**  
**Oregon Climate Change Research Institute**  
**Oregon State University, Corvallis**

# Goals

1. Translate relevant climate data about the REACCH-PNA area.
2. Communicate Climate Change

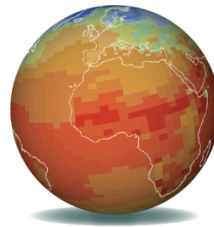


# Methods

- Climate Models
- Interviews
  - Climate Change Scientists
  - Recreationists
  - Natural Resource Managers

# Climate Modeling

- What is a climate model?
- OCCRI
- Why the HADRM3P RCP 4.5?
- What do they tell us?

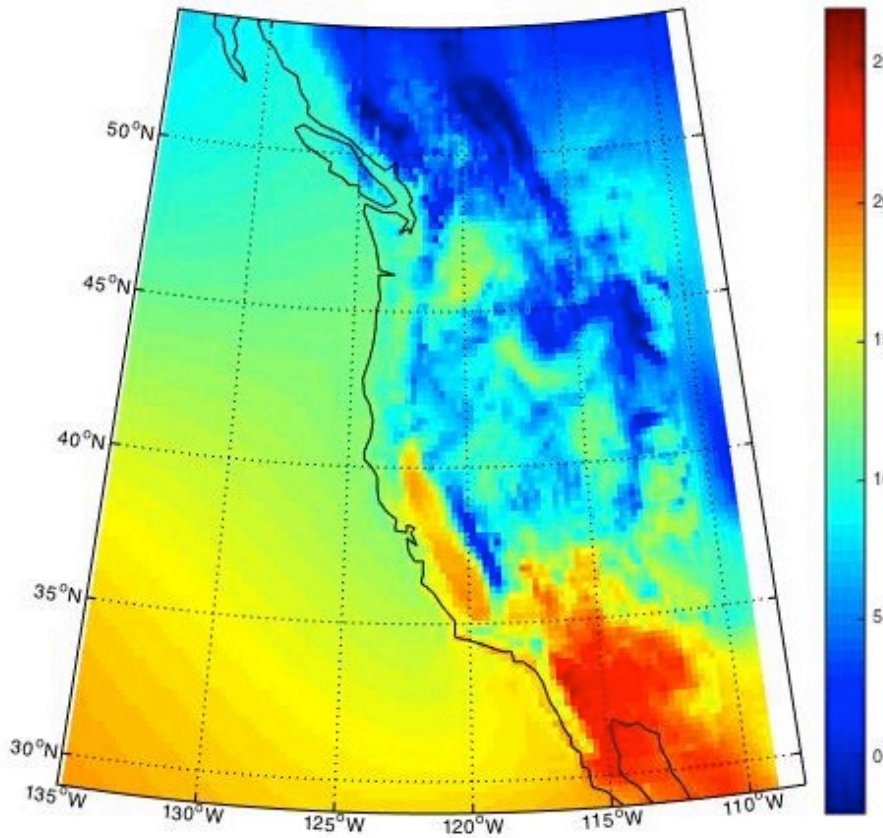


climate*prediction*.net

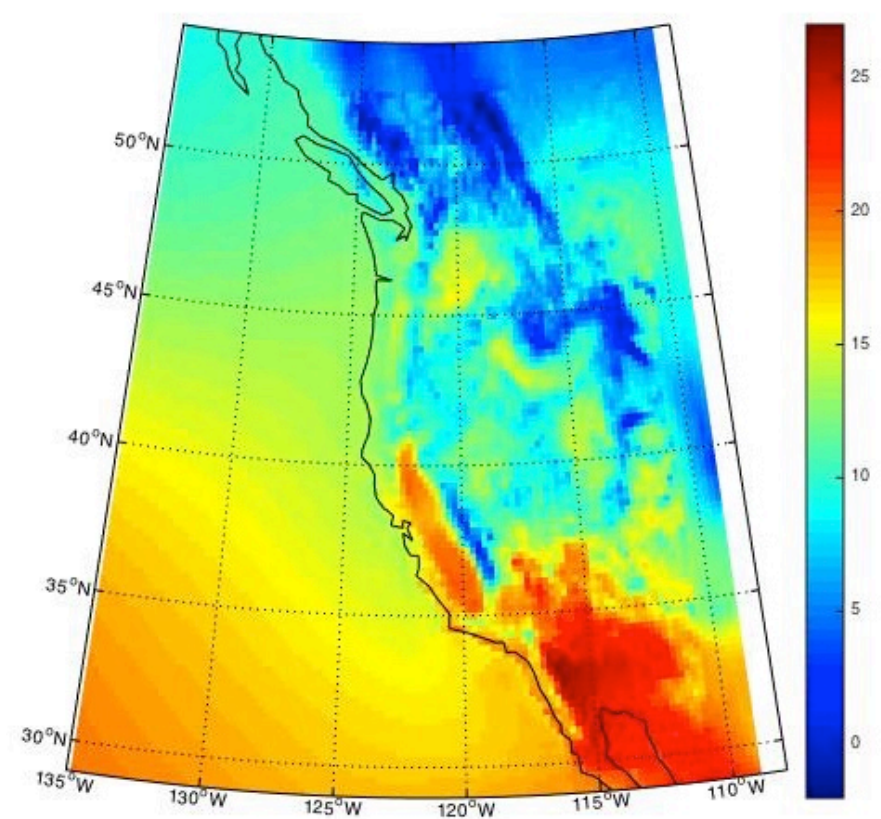


# REACCH climate models

Historical (1986-2014)

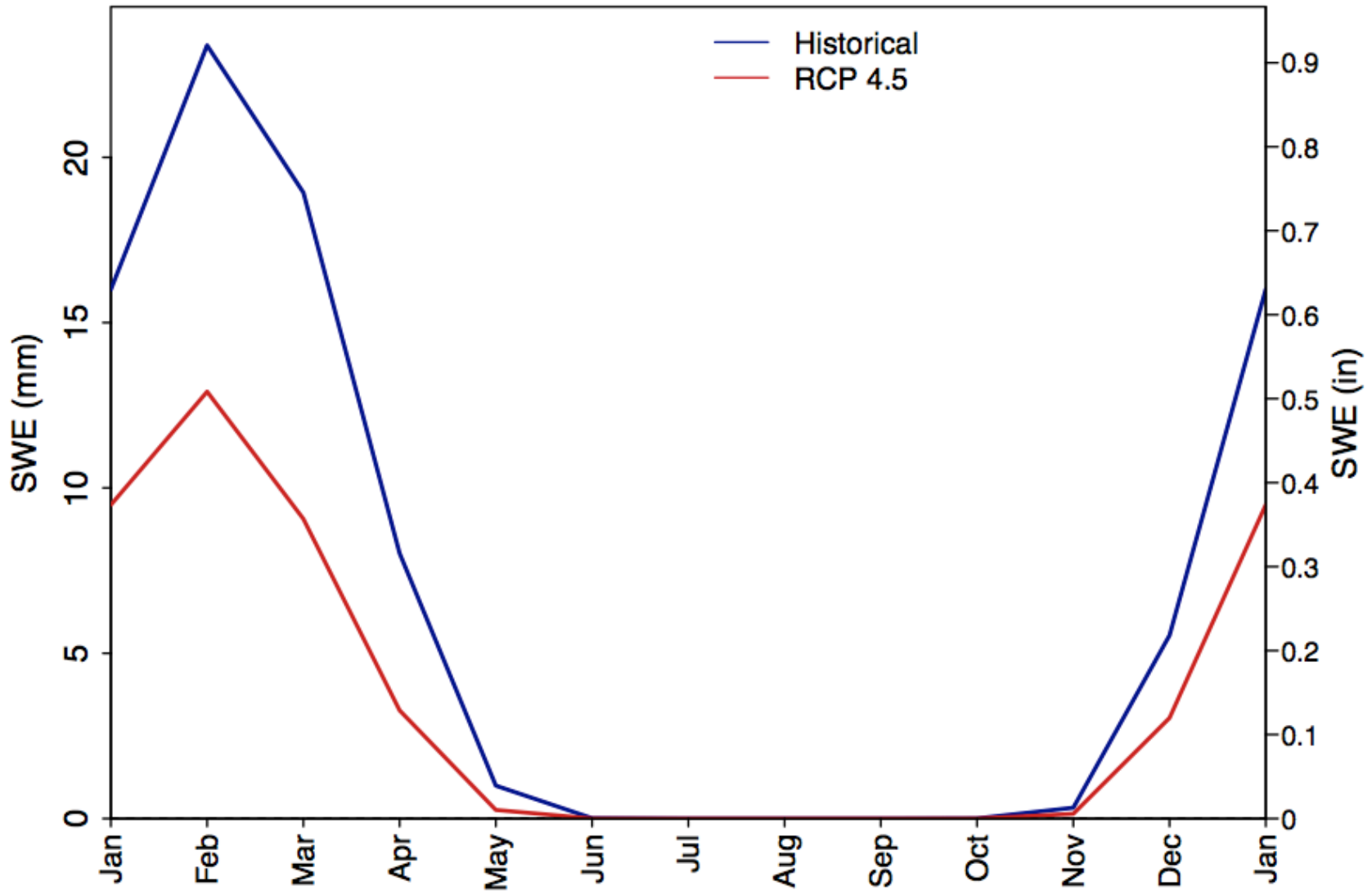


RCP 4.5 (2031-2059)

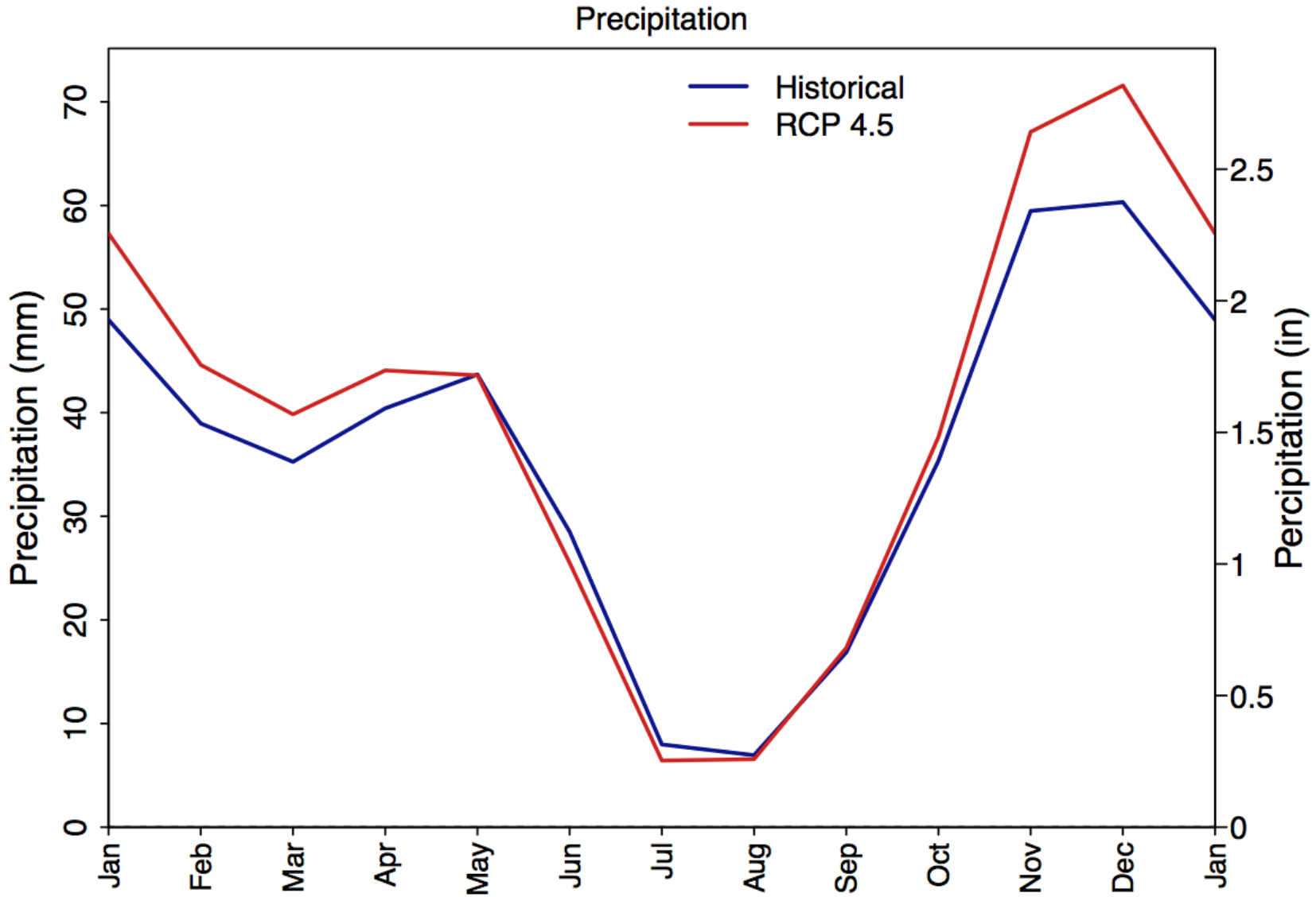


# Eastern Oregon-Washington SWE

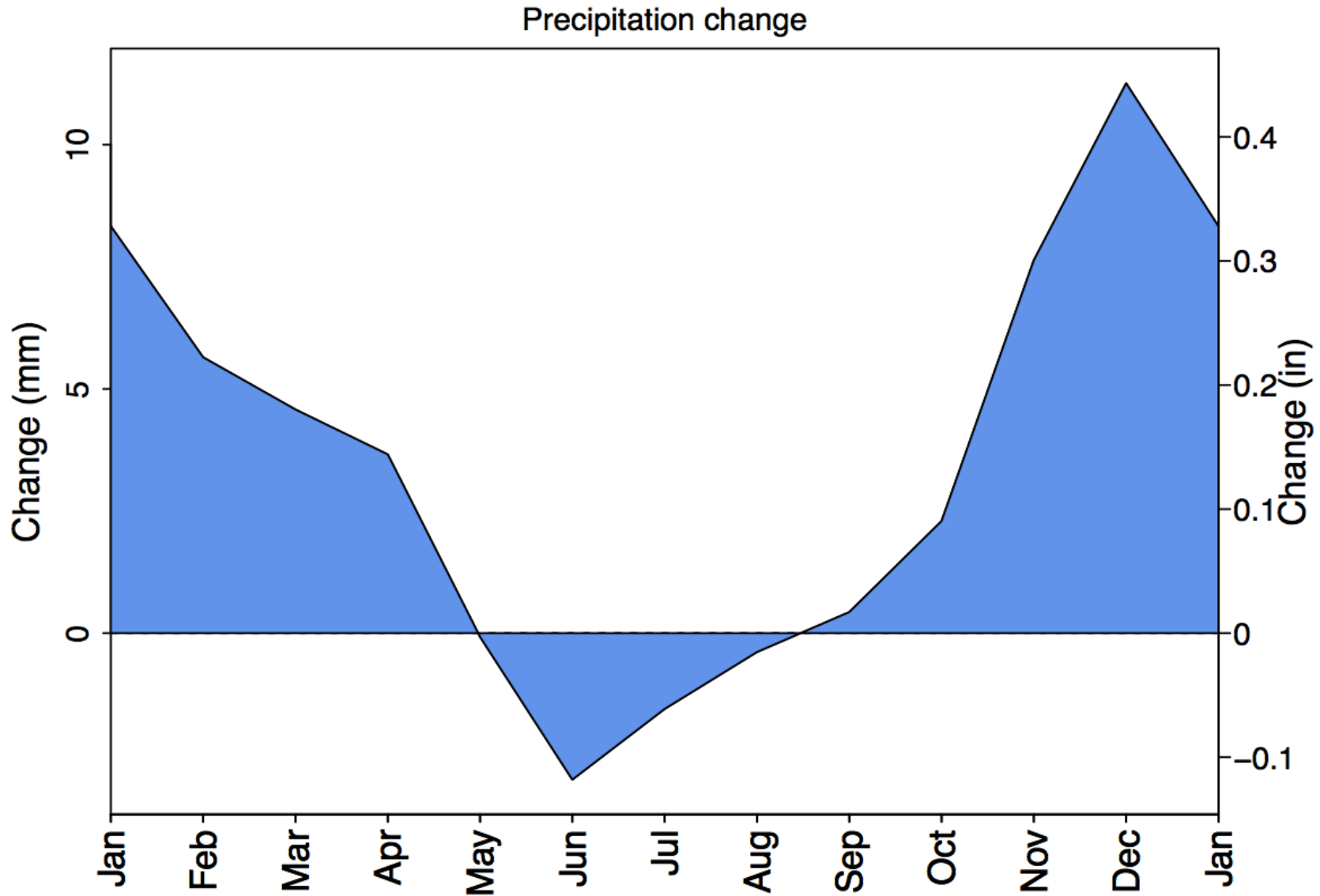
Snow water equivalent



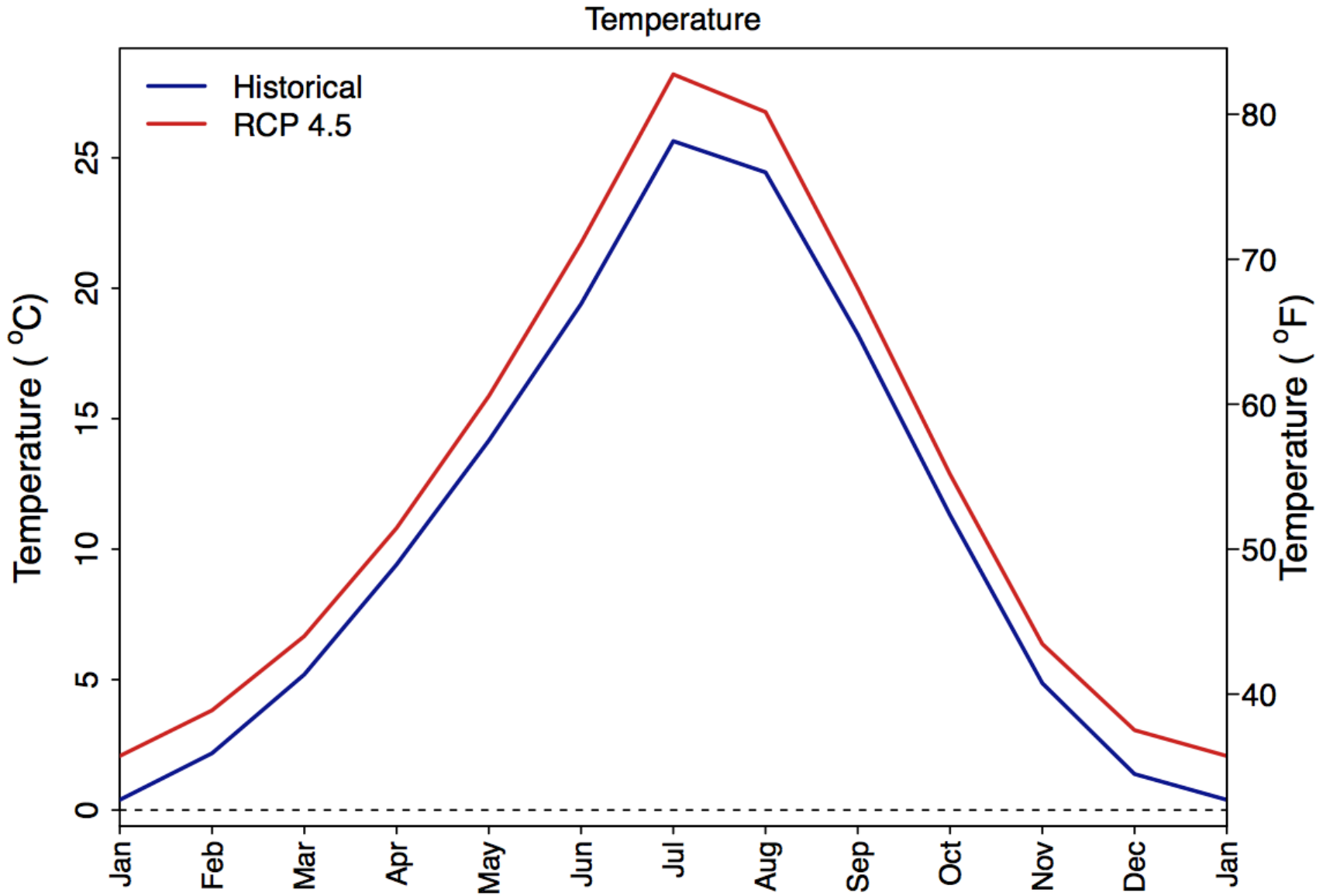
# REACCH Precipitation



# REACCH Precipitation

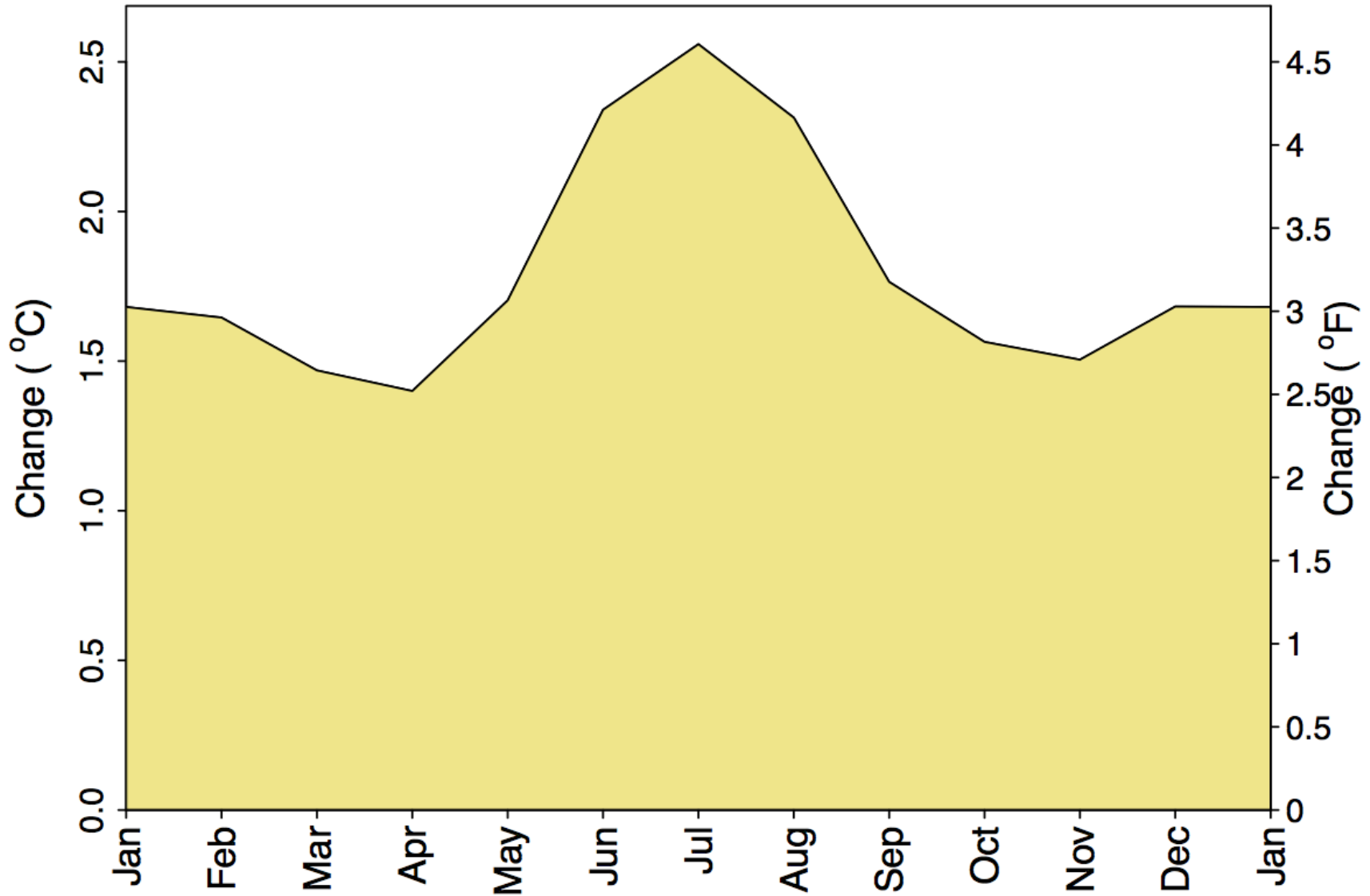


# REACCH Temperature



# REACCH Temperature

Temperature change



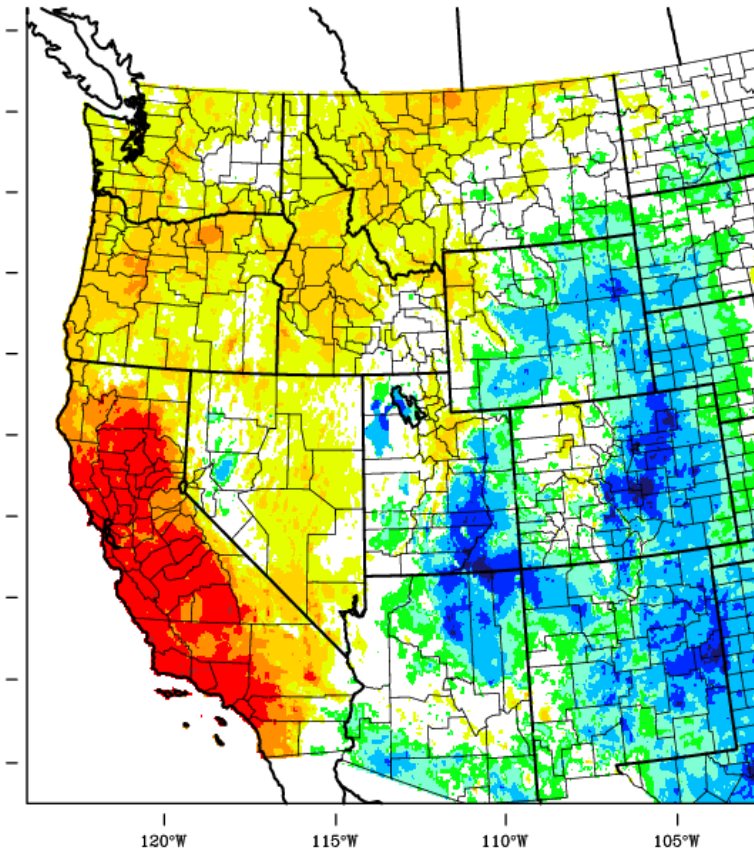


# The Future and 2015

## Precipitation % of Normal

### Western United States - Precipitation

January-June 2015 Percent of 1981-2010 Normal

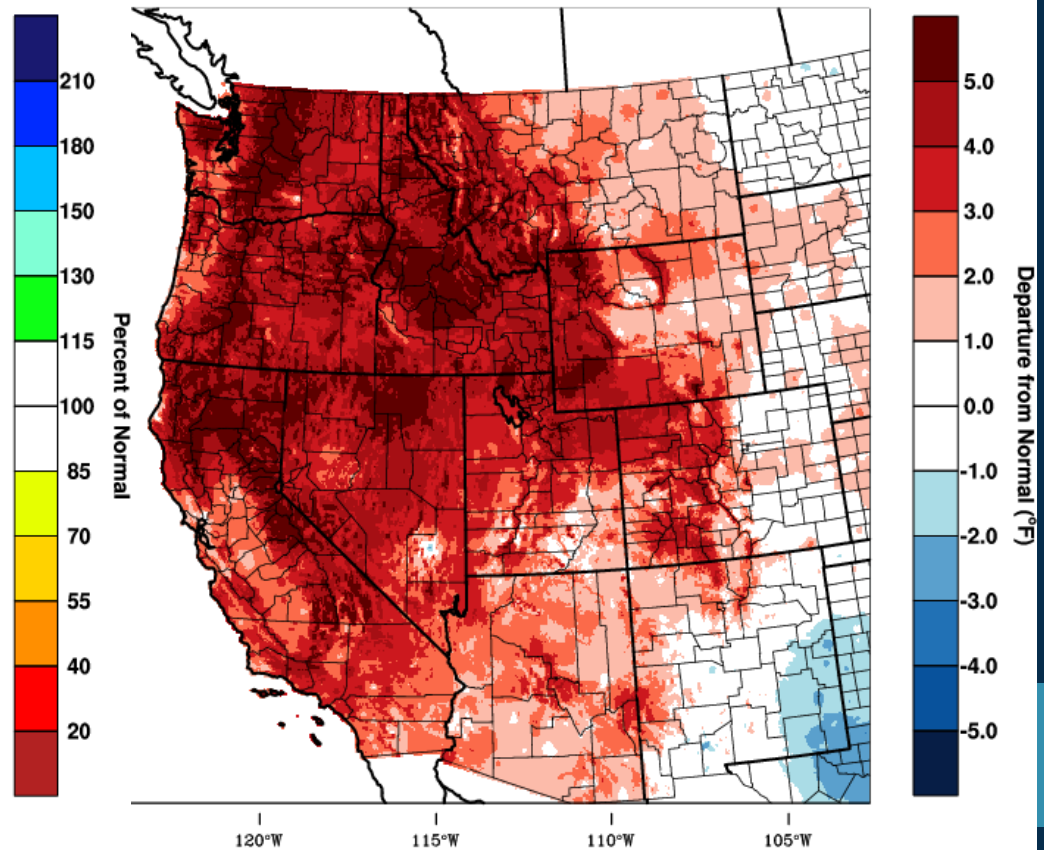


WestWide Drought Tracker - WRCC/UI Data Source - PRISM (Prelim), created 16 JUL 2015

## Temperature departure from Normal

### Western United States - Mean Temperature

January-June 2015 Departure from 1981-2010 Normal



WestWide Drought Tracker - WRCC/UI Data Source - PRISM (Prelim), created 16 JUL 2015

# What we do with what we know.

## Podcast:

- Tying together climate change, agriculture and recreation.
  - John Abatzoglou, Associate Professor at U of I
  - Kristy Borelli, Extension Specialist at REACCH
  - Aimee Eaton, OSU Alum and Journalist/Angler
  - Anne Nolin, OSU Researcher and Scientist
  - Ty Atwater, OSU ALI/Raft Guide
  - John Stevenson, CIRC Extension Specialist

# What we do with what we know.

Langlois, OR



Pullman, WA





What we do with what we know.



# Thank You!

## References

- Dalton, Meghan M. et al "Chapter 3: Water Resources." *Climate Change in the Northwest: Implications for Our Landscapes, Waters, and Communities*. N.p.: n.p., n.d. N. pag. Print.
- 2015 Climate data from West Wide Drought Tracker – University of Idaho and Desert Research Institute.
- Plots and Maps created using data generated by OCCRI experiments.

## Acknowledgments

Special thanks to Sihan Li, Linnia Hawkins, John Stevenson, David Olson, and everyone I've interviewed for my forthcoming podcast.